

NUTMEG REGATTA

Mid Connecticut Star Fleet
Milford Yacht Club
September 24-25, 2011

SAILING INSTRUCTIONS

1. Rules

The regatta will be governed by the current Racing Rules of Sailing (RRS), the rules of the ISCYRA (STCR), the Notice of Race, (except as any of these are changed by these sailing instructions) and these Sailing Instructions. In the case of a conflict between the Notice of Race and these Sailing Instructions, the Sailing Instructions will prevail.

2. Notices to Competitors

Notices to competitors will be posted on the official race notice board located adjacent to the registration area.

3. Changes in the Sailing Instructions

Any changes in the sailing instructions will be posted before 9:00 A.M, except that any change to the schedule of races will be posted by 8:00 PM on the day before it will take effect.

4. Signals Made Ashore

4.1 Signals made ashore will be displayed from a flagpole in the hoist area.

4.2 Answering Pennant "AP" means the start is postponed; do not leave the harbor area. The warning signal will be made not less than 60 minutes after lowering of "AP" with two sounds.

5. Schedule of Races

5.1 Racing is scheduled for Saturday, Sept. 24, 2011 and Sunday, Sept. 25, 2011. Up to three (3) races may be sailed each day.

5.2 The first warning signal is scheduled for 11:00 A.M. each day.

5.3 Subsequent races each day will be held as soon as possible after the end of the previous race. No more than three races will be sailed on Saturday.

5.4 On Sunday Sept. 25, 2011, no warning signal will be made after 1430.

6. Class Flag

The Class flag will be a Star Class insignia on a white field.

7. Racing Area

The racing area will be on Long Island Sound approximately 2nm south of the Milford Harbor entrance.

8. Course

8.1 Course: "O" (triangle, windward, leeward, windward finish) or "1" (triangle, windward, leeward finish), or "2" (triangle, windward, leeward, triangle, windward finish) or "3" (windward, offset, leeward, windward, offset, leeward, windward finish) or "4" (windward, offset, leeward, windward, offset, leeward finish) will be signaled by the starting vessel. No later than the warning signal, the race committee signal boat will display the course number and the approximate compass bearing and distance from the starting line to Mark #1.

8.2 The starting line may be established no more than 1/4 nm to leeward of the leeward mark.

9. Marks

Marks will be yellow or orange inflatable tetrahedron buoys.

10 Check-in

Each boat shall, while code flag "L" is displayed and prior to the warning signal, sail past the starting vessel on the starboard side to check-in for each race. RRS 35, 63.1, A4 and A5 are changed to provide that boats not complying with this instruction may receive the same score as a boat not starting, without a hearing. A boat may not protest another boat for an alleged breach of this Check-in instruction, changing RSS 60.1.

11. Start

11.1 The starting line will be between a staff displaying an orange flag on a race committee boat at the starboard end and a port-end starting mark.

11.2 A boat starting later than ten minutes after her starting signal will be scored Did Not Start without a hearing. This changes RRS A4.

12. Change of Course

12.1 To change the position of the next mark, the race committee will move the original mark (or the finishing line) to a new position.

12.2 If the race committee intends to start another race on the same day, it will display Second Substitute (with no sound) while boats are finishing.

13. Shortening the Course

After the starting signal, the race committee may shorten the course.

14. Finish

The finishing line will be between a staff displaying an orange flag, on a race committee boat at the starboard end and the port-end finishing mark.

15. Time Limit

15.1 The time limit to complete the course shall be 2 hours.

15.2 If no boat has passed Mark #1 within 35 minutes, the race will be abandoned. This abandonment will not be grounds for redress, changing RRS 62.1(a).

15.3 Boats failing to finish more than 20 minutes after the first boat sails the course and finishes will be scored Did Not Finish without a hearing. This changes RRS 35, 63.1, A4, and A5.

16. Protests and Hearings

16.1 A protesting yacht shall inform the Race Committee immediately after finishing about the sail number of the protested yacht. This modifies RRS 61. Protests will be lodged with the Race Committee within one hour after the Race Committee vessel docks. Protests shall be written on protest forms available from the Race Committee.

16.2 Sail numbers of the protester, protestees, and witnesses and the scheduled time of the hearings will be posted on the notice board within thirty (30) minutes after the expiration of the "Protest Time".

16.3 Notice of protests by the Race Committee or the Protest Committee will be posted to inform boats under RRS 61.1(b).

16.4 RRS is changed to provide that only the skipper or crew may represent a boat at a protest hearing.

16.5 RRS 62.2 and 66 are changed to provide that on the last day of racing requests for redress and requests to reopen a hearing must be delivered (a) with the protest time limit if the requesting party was informed of the decision on the previous day or (b) no later than 30 minutes after the requesting party was informed of the decision on that day.

16.6 On the last scheduled day of racing, a request for redress based on a Protest Committee decision shall be delivered no later than 30 minutes after the decision was posted. This changes RRS62.2.

16.7 If the Race Committee post a list of boats scored OCS or BFD on the Official Notice Board before the Protest Time Limit, a request for redress based on such a posted score shall be made no later than one hour after the posted time limit. This changes the first sentence of RRS 62.2.

16.8 Notices of a request for redress will be posted to inform all competitors of the time and place of hearings and the race and conditions of the request.

17. Scoring

17.1 Two races are required to be completed to constitute a series.

17.2 When four (4) or five (5) races have been completed, a boats series score will be the total of her race scores excluding her worst score.

17.3 There will be a Master's Division (age 50 years to 60 years) and a Grand Master's Division (age 60 years and over. Entrants in these divisions will also compete for the overall series.

17.4 The event shall consist of a maximum of five races.

18. Safety Regulations

A boat that retires shall inform the Race Committee or the Milford Yacht Club Dock Office as soon as possible. Competitors not leaving the dock on a race day shall inform the Race Committee or Dock Office.

19 Radio Communications

Except in an emergency, a boat shall neither make radio transmissions while racing nor receive radio communications. This restriction also applies to cell telephones.

20 Prizes

20.1 Perpetual Trophies:

Series winning skipper will be awarded the Nutmeg Trophy.

20.2 Prizes will be awarded to the top three places and the winning Master and Grand Master trophies for boats not finishing in the top three places.

20.3 There will be a special Tri-Regatta Centennial Trophy awarded to the boat with the lowest combined score for participating in the 2011 Bedford Pitcher Regatta at Cedar Point YC, the Star Centennial Regatta at Larchmont YC and the 2011 Nutmeg Regatta at Milford YC.

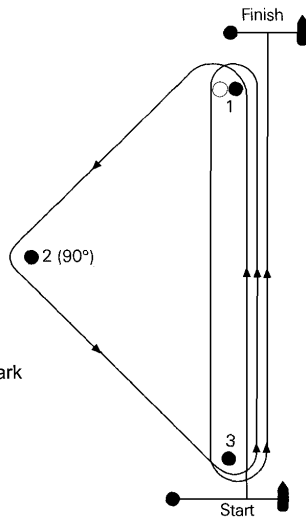
21 Disclaimer of Liability

Competitors participate in the regatta at their own risk. See RRS 4, Decision to Race. The organizing authority will not accept any liability for material damage or personal injury or death sustained in conjunction with or prior to, during or after the regatta.

Course "0"

- Start
 1
 2
 3
 1 (or 1 + offset mark)
 3 (or gate 3A – 3B)
 Finish (upwind)

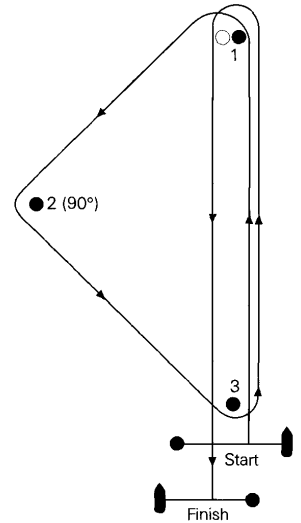
○ = optional offset mark



Course "1"

- Start
 1
 2
 3
 1 (or 1 + offset mark)
 Finish (downwind)

○ = optional offset mark



Course "2"

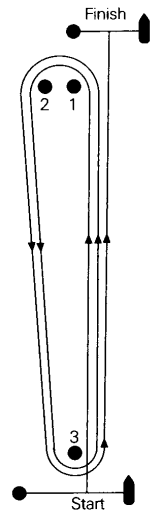
The same Course as Course "0" but one triangle in addition.

- Start
 1
 2
 3
 1
 1 (or 1 + offset mark)
 3 (or gate 3A – 3B)
 1
 2
 3
 Finish (upwind)

Course 2 may not be used at Gold events, and may only be used at Silver events with approval of the continental committee. (STCR 34.3.1)

Course "3"

- Start
 1
 2
 3 (or gate 3A-3B)
 1
 2
 3 (or gate 3A-3B)
 Finish (upwind)



Course "4"

- Start
 1
 2
 3 (or gate 3A – 3B)
 1
 2
 Finish (downwind)

